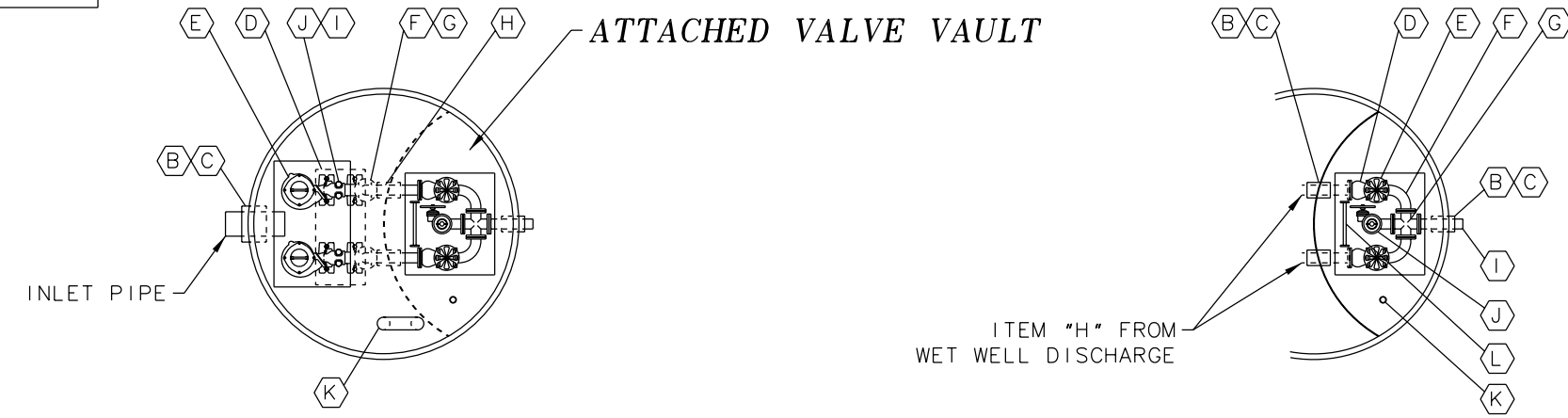
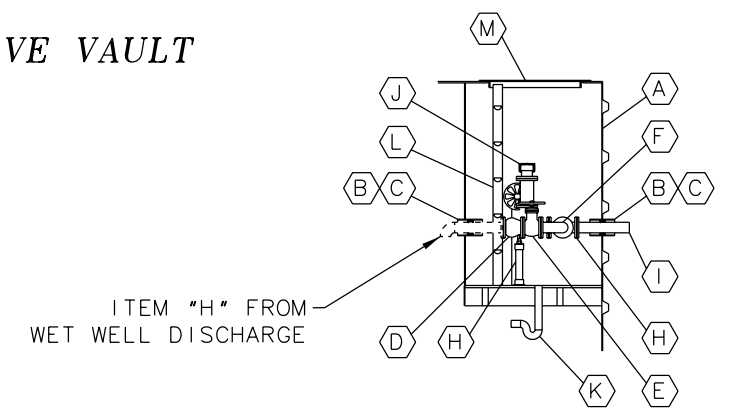
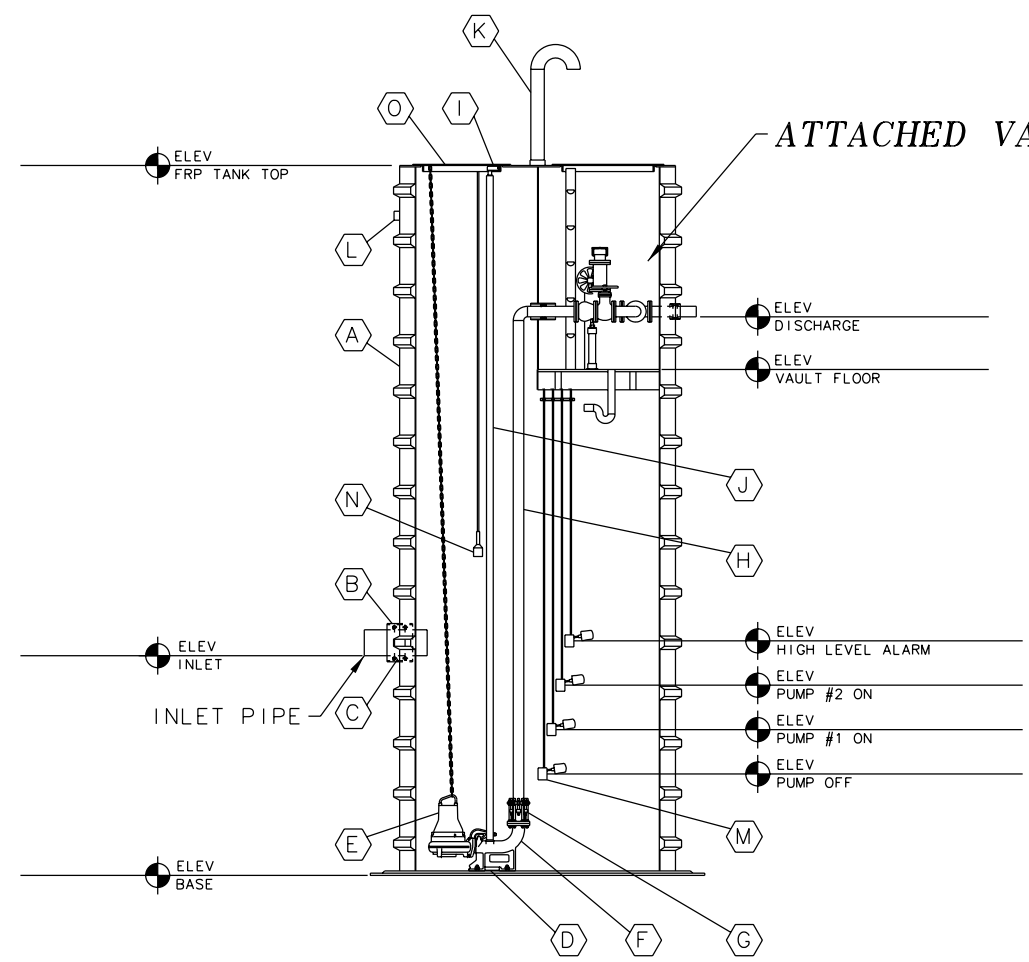


SENSOR AND ELEVATION TABLE		
LEVEL ELEVATION	DISTANCE BETWEEN POINTS	SET POINT DESCRIPTION
		WELL FINISH GRADE ELEV.
		SEWER INVERT IN
		DISCHARGE INVERT OUT
		HIGH LEVEL ALARM
		LAG PUMP START
		LEAD PUMP START
		PUMP STOP
		WELL BASE ELEVATION
		VAULT BASE ELEVATION

WET WELL		
ITEM	QTY	DESCRIPTION
A	1	FRP WET WELL/LIFT STATION
B	3	FRP PIPE SLEEVE FOR MECHANICAL FITTING
C	3	MECHANICAL FITTING FOR INLET/OUTLET PIPING
D	1	BOLTING PLATE FOR PUMP (316 SS, 1/4" THICK)
E	2	PUMP
F	2	DISCHARGE ELBOW
G	2	COUPLING FOR DISCHARGE PIPING
H	2	DISCHARGE PIPE
I	4	GUIDE RAIL BRACKET
J	4	GUIDE RAIL
K	1	FRP NPT WITH PVC VENT PIPE WITH GOOSE-NECK AND SCREEN
L	3	FRP COUPLING (FOR CONDUIT)
M	4	FLOAT
N	1	ULTRASONIC TRANSDUCER
O	1	ALUMINUM HATCH



VALVE VAULT		
ITEM	QTY	DESCRIPTION
A	1	FRP ATTACHED VALVE VAULT
B	3	FRP PIPE SLEEVE FOR MECHANICAL FITTING
C	3	MECHANICAL FITTING FOR INLET/OUTLET PIPING
D	2	CHECK VALVE
E	2	PLUG VALVE
F	2	90° ELBOW
G	1	CROSS
H	2	PIPE STAND SUPPORT
I	1	DISCHARGE PIPE
J	1	EMERGENCY PUMP OUT CONNECTION
K	1	DRAIN LINE
L	1	ALUMINUM LADDER
M	1	ALUMINUM HATCH



### ATTACHED VALVE VAULT

- THIS DRAWING IS FOR ILLUSTRATIVE PURPOSES ONLY.
- ILLUSTRATION SHOWS 300# PEDESTRIAN LOAD LIMIT APPLICATION.
- 6', 8', 10' & 12' DIAMETERS AVAILABLE.
- CONSULT A XERXES SALES REPRESENTATIVE FOR SPECIFIC APPLICATIONS.

### WET WELL

SITE SPECIFICATION SHEET

**XERXES**<sup>®</sup>  
CORPORATION

TITLE: FIBERGLASS WET WELL WITH ATTACHED VALVE VAULT FLAT BOTTOM

DATE: 1-10 DR. NO.: S20-724.00